

FUN & ADVENTURE, TRAVERS

RIDDLE IN VAL-DE-TRAVERS

It is 1984. Mr MacAdam, director of the Neuchâtel Asphalt Company (NACO), was brutally murdered in his home while receiving friends for dinner.

Put on your Sherlock Holmes shoes and go as a team to solve a series of riddles to unravel the mystery of this murder. This life-size "Cluedo" will appeal to your sense of deduction and observation. Good luck!

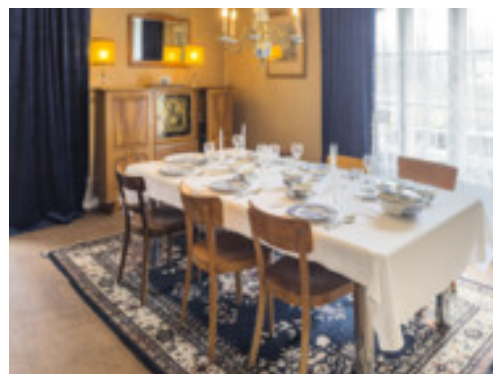
PRICES

Prices per person

Flat rate for up to 19 people	CHF 700.-
Up to 29 people (per person)	CHF 35.-
Up to 40 people (per person)	CHF 30.-

GOOD TO KNOW

- For groups and companies, the game is offered all year round, at any time, on reservation
- The game can be combined with an aperitif, a meal at the Café des Mines and/or a visit to the Asphalt Mines before or after the game
- Between 10 and 40 players



CONTACT

Mines d'asphalte
Site de la Presta
2105 Travers

+41 32 864 90 64
info@gout-region.ch
mines-asphalte.ch

