

SPORTS & LEISURE, LE PONT

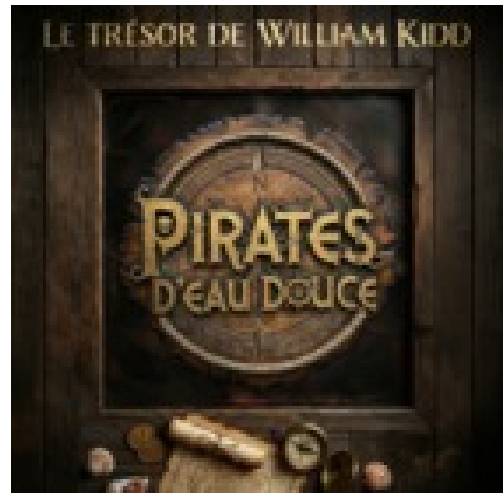
"PIRATES D'EAU DOUCE" ADVENTURE

What if the Vallée de Joux hasn't revealed all its secrets? "Pirates d'eau douce" is a thrilling new puzzle game on the trail of the legendary William Kidd's treasure. Starting from Pont station, this two-hour adventure is best enjoyed in teams of two to six players, with friends, family or colleagues.

An activity that's "guaranteed fun"!

GOOD TO KNOW

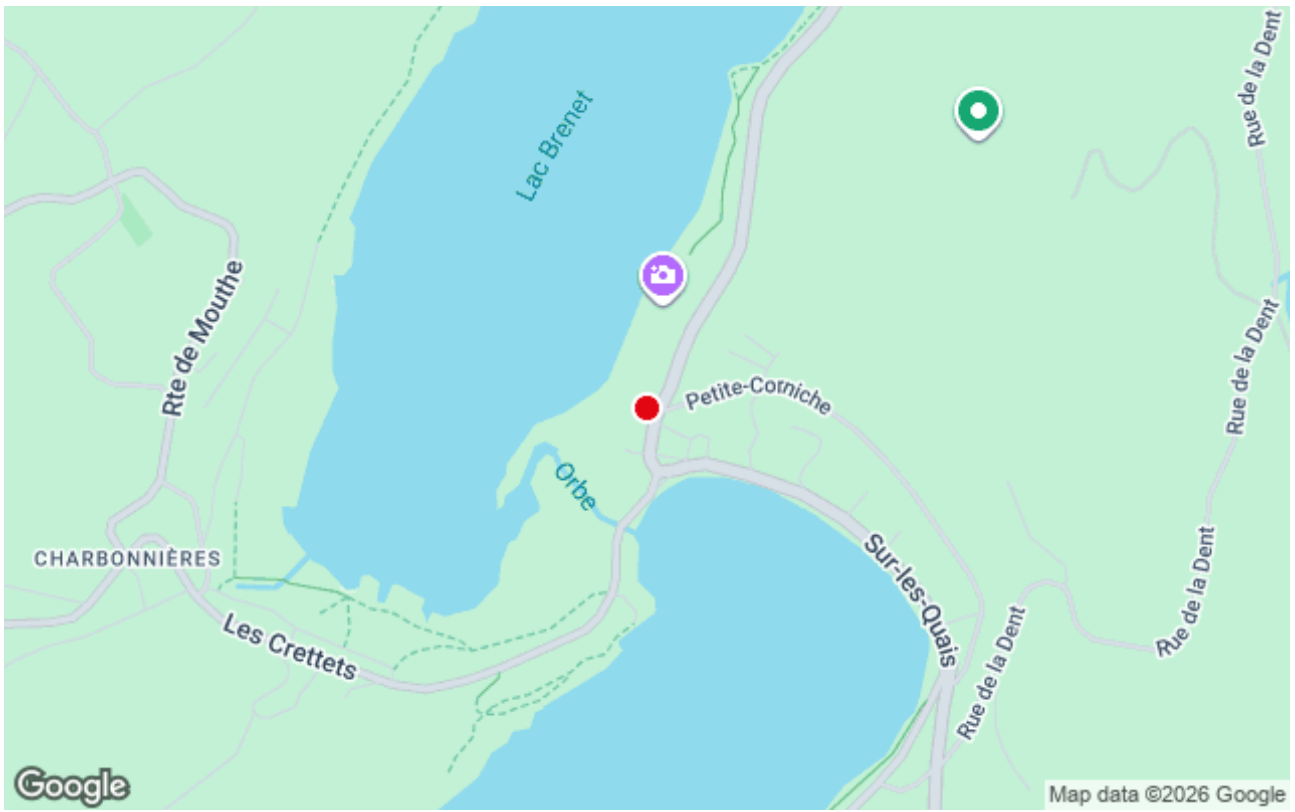
Only in French



CONTACT

Klugle Escape Game
Gare du Pont
1342 Le Pont

+41 21 558 45 39
staff@klugle.com
klugle.com



PDF généré le 10.07.2026