

HOTEL, PORRENTUUY

HOTA HOTEL PORRENTUUY

Overlooking a newly refurbished park next to the old town, Hota Hotel Porrentruy give you a taste of local life. With its Hota Lounge living space and dedicated wellness area, our hotel is ideal for business travellers seeking comfort and tourists in search of adventure.

Hota means local colour

Our hotel showcases the very essence of the region through thoughtful collaborations. Thanks to a partnership with Ô Vergers d'Ajoie – Swiss Fruits and Distillery Museum, regional specialties have the chance to shine in our hotel through its stills and orchards theme. We're a certified Bike Hotel, and we want the world to know that the Ajoie region is a fantastic destination for cycle touring.

In the shadow of Porrentruy Castle

Our rooms

At Hota Hotels, we've done away with stars, so we can shine in our own unique way. Our approach is based on a range of room types: Hota Hotel Porrentruy offers 26 Classic Rooms (double rooms with or without balcony and twin rooms), 10 Prestige Rooms (5 with balcony and 5 without, all with minibar, kettle and coffee machine), and 3 original rooms for families. All 39 rooms have a 4K TV, desk and air conditioning.

The Hota Lounge

A warm and welcoming space where guests can breakfast on local produce or sip a damassine, catch up with work or catch up with friends.

Wellness area and Bike Hotel facilities

As well as a wellness area with a sauna, hammam and gym, our hotel has everything cyclists need before and after their ride:

- Secure bike storage
- Bike cleaning station
- Tool kit
- Hearty local breakfast
- Route planning information

CONFERENCE ROOMS

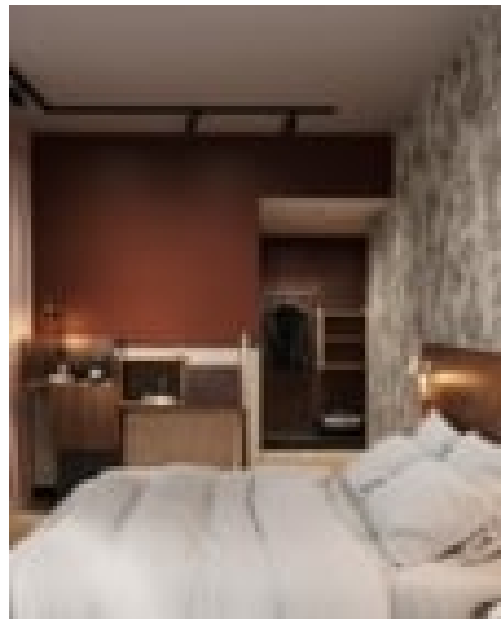
In partnership with the municipality of Porrentruy, we offer two conference rooms: one seating 12 people, the other seating 35. We can also provide full packages that include accommodation, breakfast, conference attendance and catering from our partners.

Hota Hotel Porrentruy: a prime location

Our hotel stands next to the old town and overlooks a leafy park that's a pleasant spot for stroll with friends or family. Just a few minutes' walk away from the station, its central location provides easy access to the wider region.

Porrentruy's heritage and dynamism make it an attractive destination for curious travellers. Highlights such as Porrentruy Castle and Jura Bike Park, not to mention Ajoie's fruit orchards and Préhisto-Parc are what brings families, cyclists and culture vultures to Hota Hotel Porrentruy.

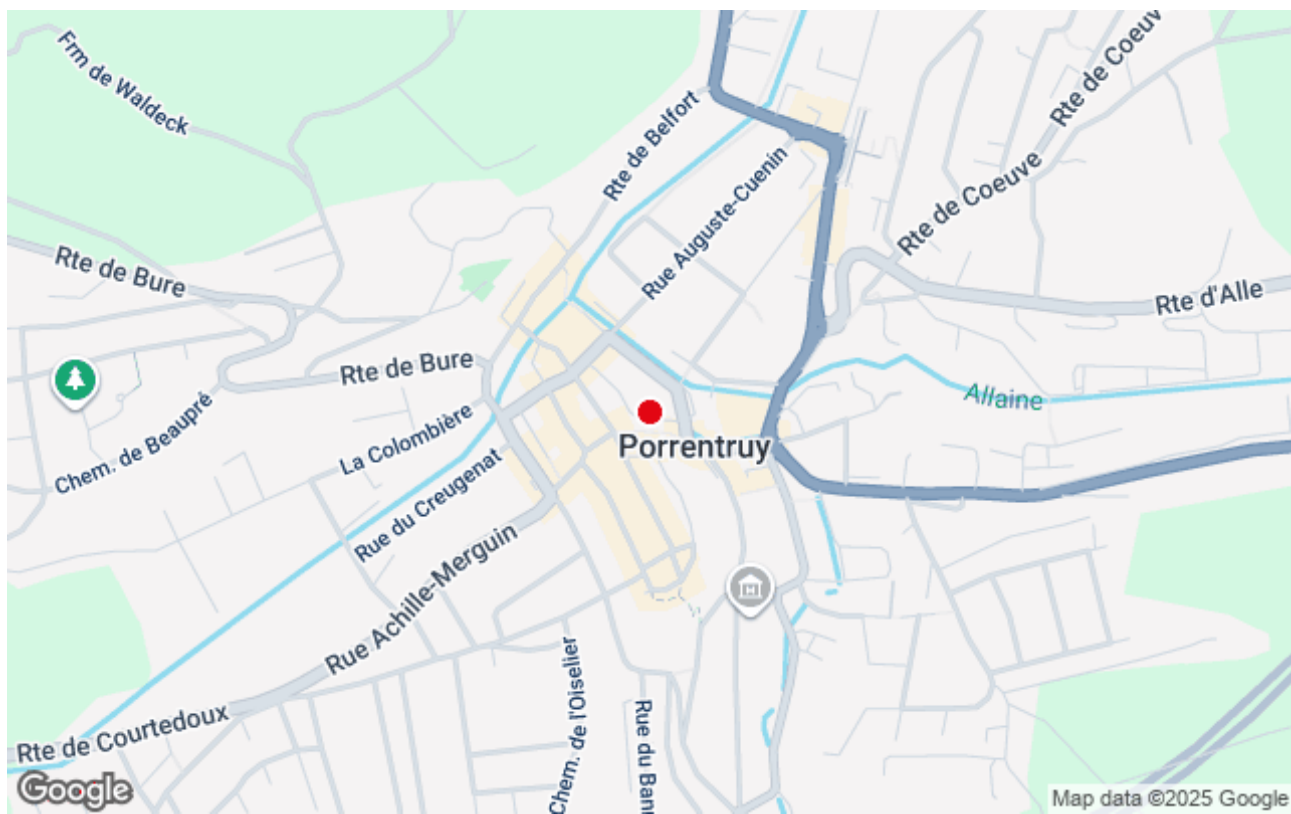
The city lies on cantonal and national cycle routes, with the Ajoie region's gently rolling countryside promising superb riding through forests and orchards.



CONTACT

Hota Hotel Porrentruy
Rue Soeur Rita 1
2900 Porrentruy

+41 32 465 94 10
porrentruy@hotalhotels.ch
hotalhotels.com



PDF généré le 24.09.2025